



# GAT MONTHLY MEMBERSHIP PROGRESS REPORT

Results as of: 10/31/2020

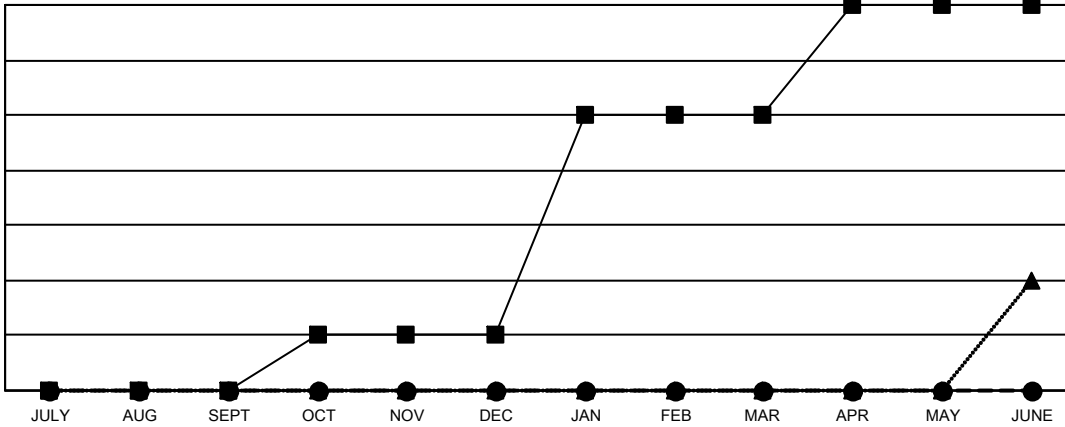
Multiple District 202

LOCATION: NEW ZEALAND

Clubs			
RESULTS FOR 2020-2021			
QUARTER	NEW CLUB GOAL	NEW CLUBS	DROPPED CLUBS
JULY/AUG/SEPT	0	0	4
OCT/NOV/DEC	1	0	0
JAN/FEB/MAR	4	0	0
APR/MAY/JUNE	2	0	0

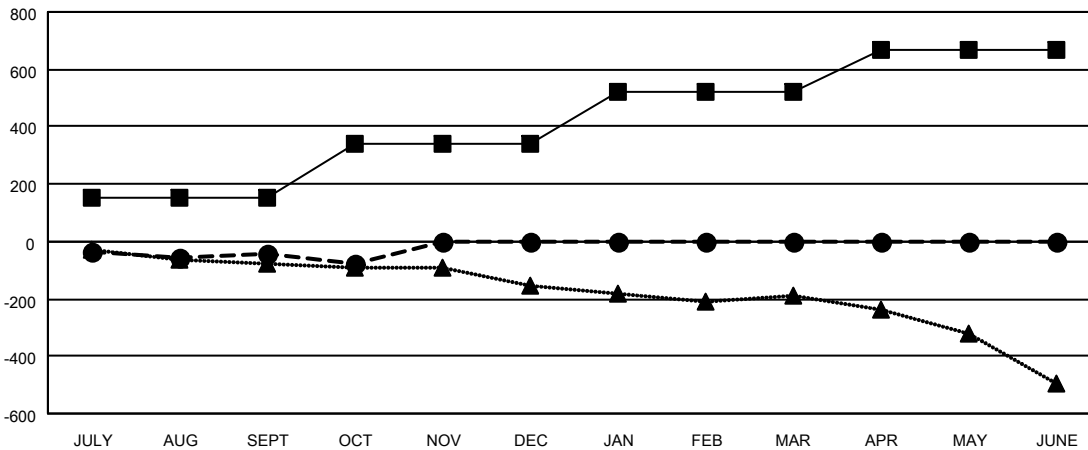
Members			
RESULTS FOR 2020-2021			
QUARTER	MEMBER GROWTH NET GOAL	MEMBER GROWTH ACTUAL	DROPPED MEMBERS ACTUAL (including transfers)
JULY/AUG/SEPT	154	194	205
OCT/NOV/DEC	185	61	88
JAN/FEB/MAR	181	0	0
APR/MAY/JUNE	146	0	0

GOALS AND ACTUAL NEW CLUBS CUMULATIVE



- - CURRENT YEAR GOALS FOR NEW CLUBS
- - CURRENT YEAR ACTUAL NEW CLUBS
- ▲ - LAST YEAR ACTUAL NEW CLUBS

GOALS AND ACTUAL MEMBERS CUMULATIVE



- - MEMBER GROWTH NET GOAL
- - MEMBER GROWTH ACTUAL
- ▲ - LAST YEAR MEMBERSHIP ACTUAL

DROPPED CLUBS: 4	
<u>DROPPED MEMBERS</u>	
DECEASED	35
CLUB CANCELLED	0
OTHER	258
<b>TOTAL</b>	<b>293</b>

114 CLUBS OF 337 ADDED 1 OR MORE NEW MEMBERS

<u>GENDER DISTRIBUTION</u>	
MALE	6,173 (71.03%)
FEMALE	2,518 (28.97%)

[CLICK HERE FOR CUMULATIVE MEMBERSHIP DATA](#)

TOTAL FAMILY UNIT MEMBERS	744
FAMILY MEMBERS PAYING HALF DUES	376